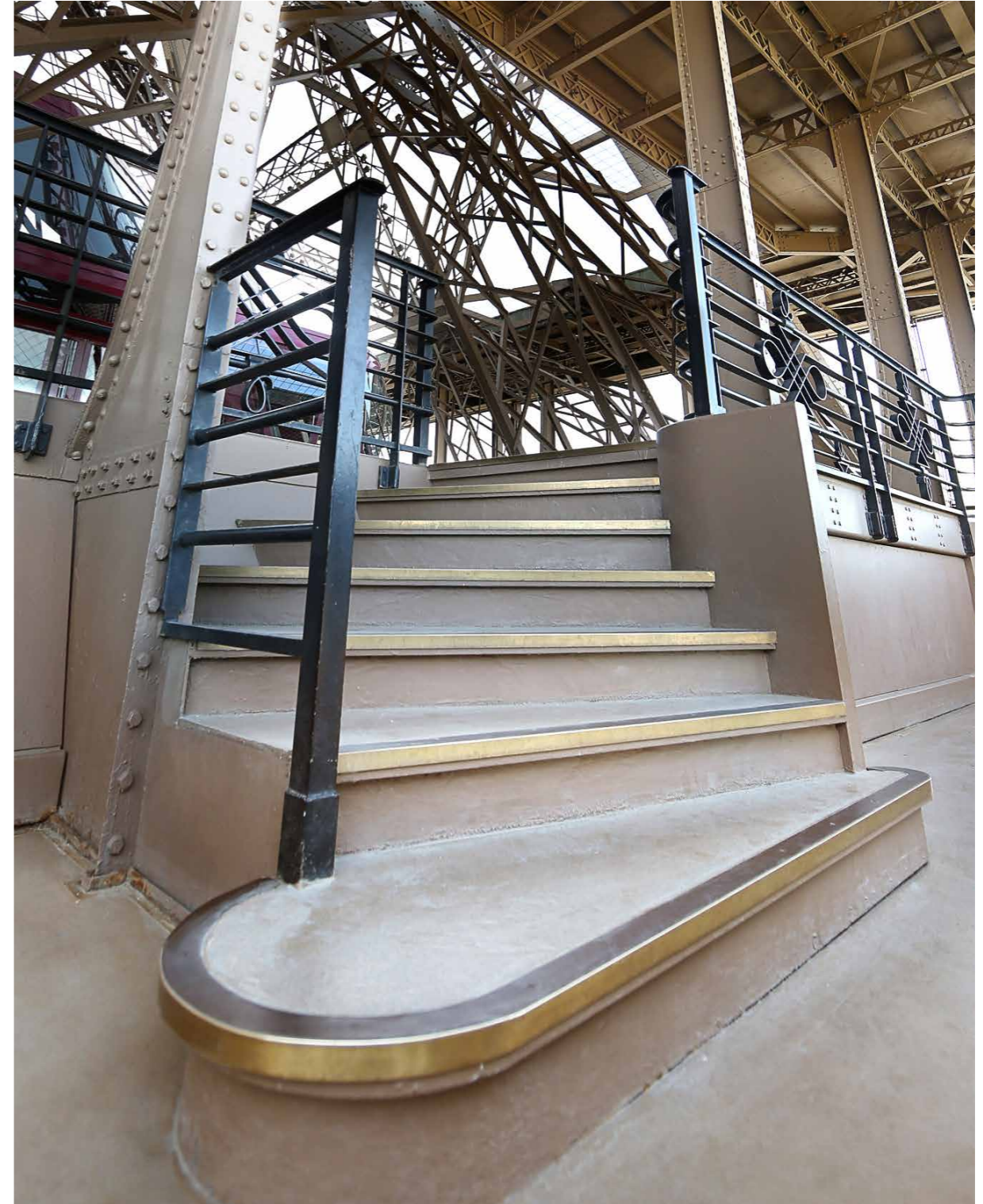
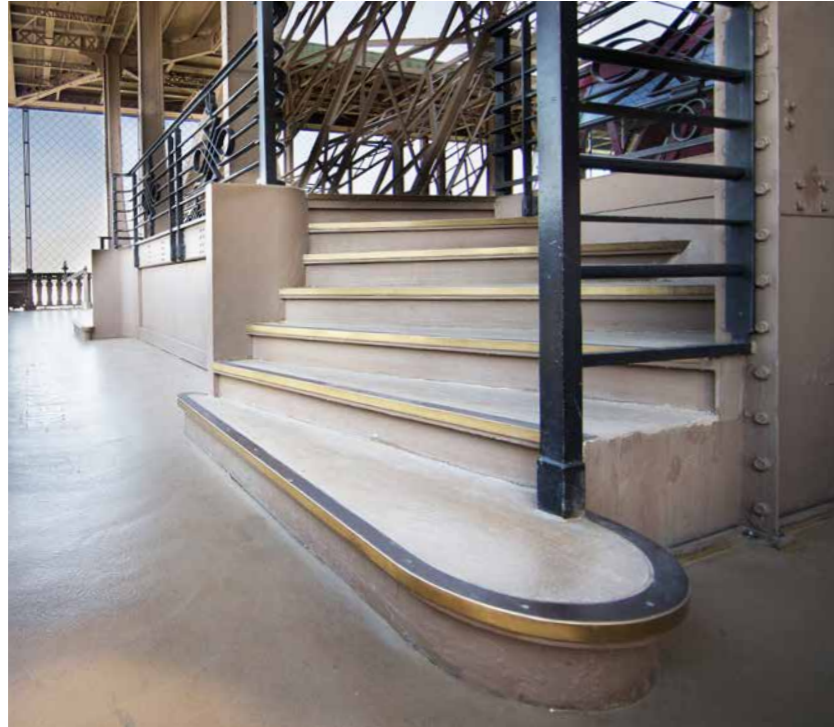


Group

Accessories Project: Eiffel Tower



“ We are very honoured to have been involved in the restoration of such a prestigious and iconic landmark. Having our product trusted to be installed in what was once the tallest building in the world, and famed for its spiralling stair cases, is a huge compliment. With almost seven million visitors a year, the staircases at the Eiffel Tower see exceptionally heavy traffic on a daily basis, so it was crucial to specify fit-for-purpose stair edgings with a proven track record. ”

Anthony Roberts
Product Marketing Manager

In the first renovation operation to be carried out at the tower in almost 30 years, the first-floor platform has been transformed with the installation of a gangway and glass panels all the way round the central void, to give visitors the impression of walking on air, 57 metres above the ground.

“Whilst we are relied upon to deliver exceptional quality and service to many worldwide iconic projects, this one stands-out and particularly resonates with us.”

Gradus' Traditional Bronze stair edgings have been installed on 20 staircases that guide visitors from the upper deck to the scenic view promenade. The profiles feature a slip-resistant insert, which maximises underfoot contact and reduces the risk of slips, trips and falls.

Product Specified:

- Traditional Bronze Range Stair Edging – [BG511](#)